

Project: #1909 B

Date: Dec 2020

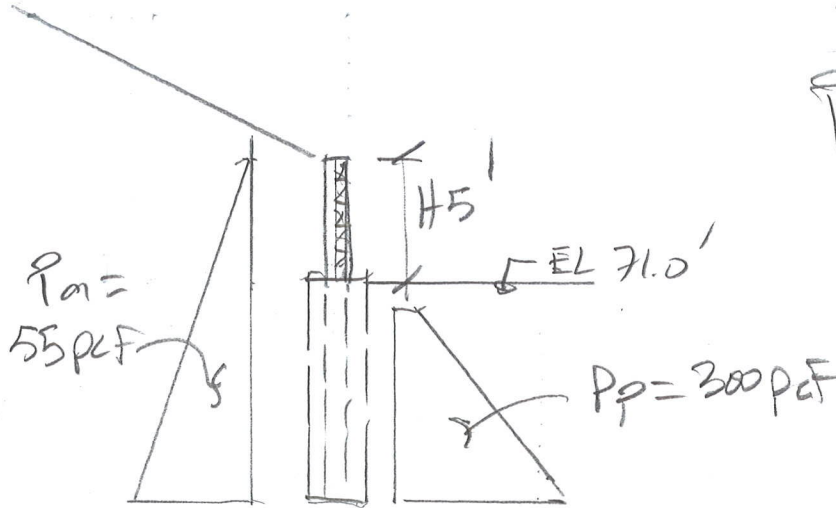
Client: WEN

Page Number:

Add'l scope requested -

Replace 4' to 5' tall rockery w/ soldier piles.

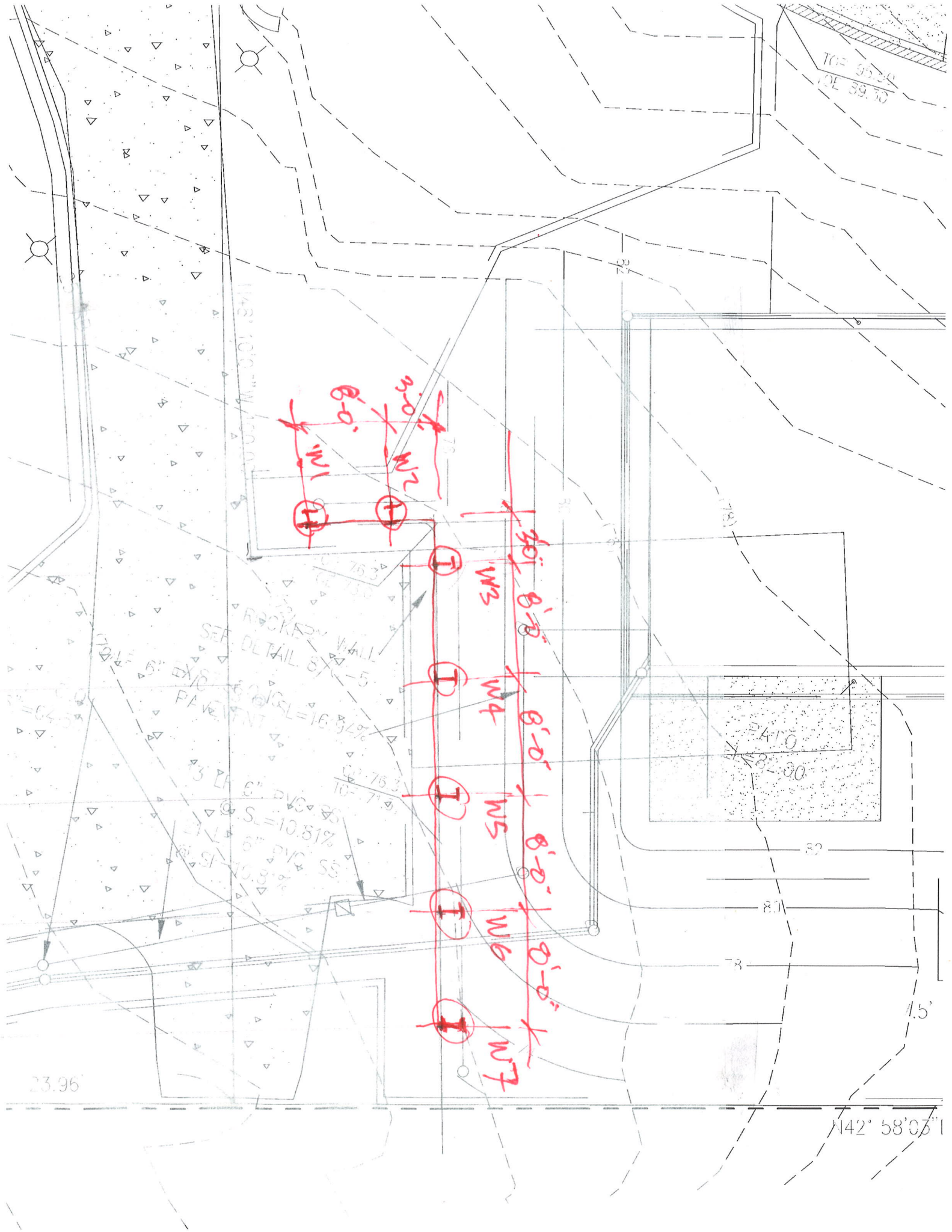
SEE SPREADSHEET:



W14x22 IN 24" ϕ
 HOLES @ 8' OC.
 W/ B.O.P @ EL 62.0'
 HAS F.O.S ≥ 1.5



12/07/2020



TO = 99.39
OL = 89.30

143' 10" (0.01 S+)

W1
W2
W3

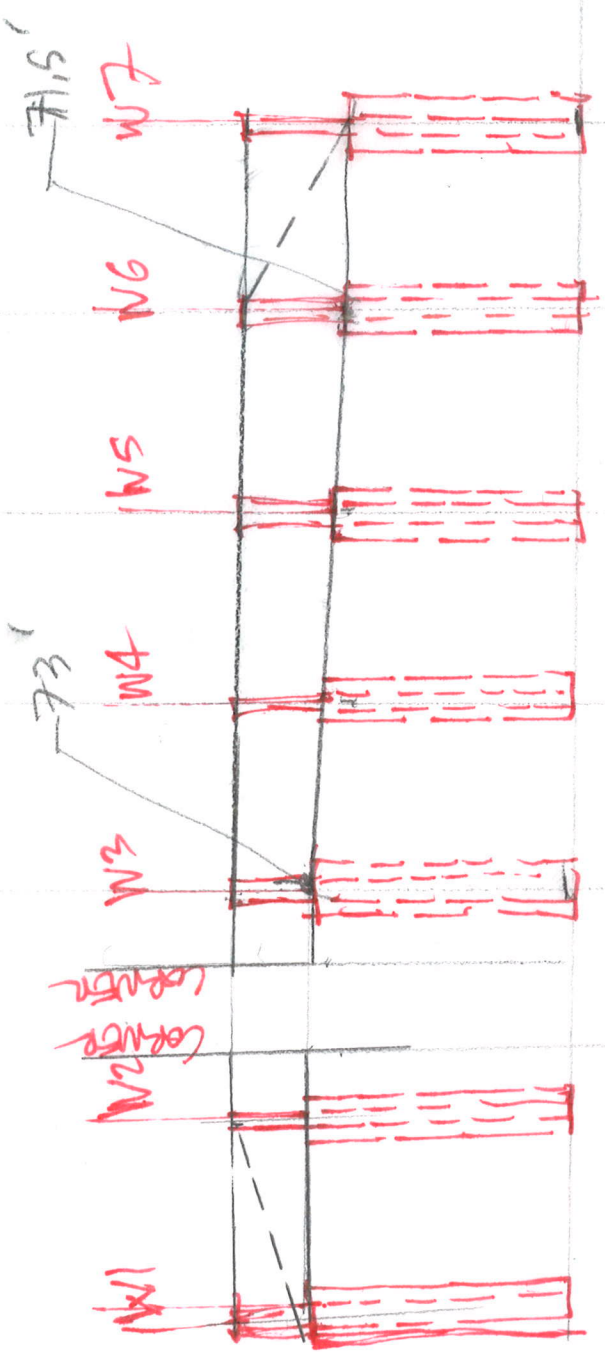
W4
W5
W6
W7

ROCKER WALL
SEE DETAIL 8
5' EXPOSED
PAVEMENT
3" DIA
6" DVC
S.S.
SL = 16.34%
SL = 10.81%
SL = 10.00%
SS



23.96'

142' 58' 07"



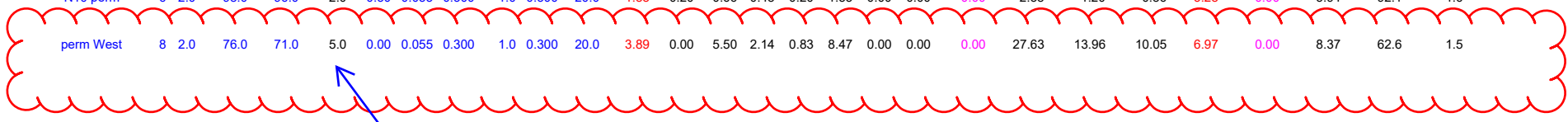
Pile No.	Pile	Hole Dia	TOP	BOP
W1-W7	W14X22	24"	76	62

With Pa below Excav

JOB - # 19098 - Wen

CANTILEVER PILES - (Pa on pile Spa. and 1x Dia. below B.O.E.)

PILE #	Elevation				H	Q	Pa	Pp1	xi	Pp2	xi2	x	FaQ	Fa1	Fa2	Fa3	Fp	Fp2	Fp3	ZFa -Z Fp	Mmax	Sx Req'd	Sx Req'd	d	Z M(d)	1.2 * d	Elevation	GLOBAL
	SPA.	DIA.	T.O.P.	B.O.E.																								
TEST	6	2.0	106.0	91.5	14.5	0.00	0.055	0.300	1.0	0.300	20.0	9.64	0.00	34.69	15.38	5.11	55.18	0.00	0.00	0.00	433.79	219.08	157.74	16.96	0.00	20.36	71.1	1.5
C1 temp	6	2.0	100.0	90.5	9.5	0.00	0.045	0.300	1.0	0.300	16.0	5.63	0.00	12.18	4.81	1.43	18.43	0.00	0.00	0.00	94.98	47.97	34.54	10.26	0.00	12.31	78.2	1.5
C2 temp	6	2.0	97.0	90.5	6.5	0.00	0.045	0.300	1.0	0.300	16.0	3.94	0.00	5.70	2.30	0.70	8.71	0.00	0.00	0.00	31.75	16.03	11.54	7.22	0.00	8.66	81.8	1.5
C3 temp	6	2.0	94.0	90.5	3.5	0.00	0.045	0.300	1.0	0.300	16.0	2.32	0.00	1.65	0.73	0.24	2.63	0.00	0.00	0.00	5.64	2.85	2.05	4.21	0.00	5.06	85.4	1.6
E5-E8 temp	6	2.0	108.0	99.3	8.7	0.00	0.055	0.125	1.0	0.300	16.0	10.86	0.00	12.40	10.36	6.49	29.25	0.00	0.00	0.00	154.18	77.87	56.07	16.16	0.00	19.39	79.9	1.3
E5-E8 perm	6	2.0	108.0	103.0	5.0	1.00	0.055	0.150	1.0	0.300	16.0	6.51	1.65	4.13	4.29	2.33	12.40	0.00	0.00	0.00	44.83	22.64	16.30	10.43	0.00	12.52	90.5	1.5
temp E9	6	2.0	107.0	99.3	7.7	0.00	0.055	0.125	1.0	0.300	16.0	9.63	0.00	9.71	8.12	5.10	22.93	0.00	0.00	0.00	107.81	54.45	39.20	14.88	0.00	17.86	81.5	1.5
perm E9	6	2.0	107.0	103.0	4.0	1.00	0.055	0.150	1.0	0.300	16.0	5.44	1.32	2.64	2.99	1.63	8.58	0.00	0.00	0.00	26.10	13.18	9.49	8.76	0.00	10.51	92.5	1.5
temp E10	6	2.0	106.0	96.0	10.0	0.00	0.055	0.125	1.0	0.300	20.0	12.51	0.00	16.50	13.76	8.61	38.86	0.00	0.00	0.00	234.23	118.30	85.17	19.22	0.00	23.07	72.9	1.4
perm E10	6	2.0	106.0	100.0	6.0	1.00	0.055	0.150	1.0	0.300	20.0	7.57	1.98	5.94	5.83	3.15	16.91	0.00	0.00	0.00	70.80	35.76	25.75	12.11	0.00	14.53	85.5	1.5
temp E11	6	2.0	105.0	96.0	9.0	0.00	0.055	0.125	1.0	0.300	20.0	11.27	0.00	13.37	11.16	6.99	31.51	0.00	0.00	0.00	171.99	86.86	62.54	17.36	0.00	20.83	75.2	1.5
perm E11	6	2.0	105.0	100.0	5.0	1.00	0.055	0.150	1.0	0.300	20.0	6.51	1.65	4.13	4.29	2.33	12.40	0.00	0.00	0.00	44.83	22.64	16.30	10.43	0.00	12.52	87.5	1.5
temp E11	6	2.0	104.0	96.0	8.0	0.00	0.055	0.125	1.0	0.300	20.0	10.04	0.00	10.56	8.83	5.54	24.93	0.00	0.00	0.00	121.90	61.57	44.33	15.50	0.00	18.59	77.4	1.5
perm E11	6	2.0	104.0	100.0	4.0	1.00	0.055	0.150	1.0	0.300	20.0	5.44	1.32	2.64	2.99	1.63	8.58	0.00	0.00	0.00	26.10	13.18	9.49	8.76	0.00	10.51	89.5	1.5
S1 perm	5	2.0	103.0	90.0	13.0	2.00	0.045	0.300	1.0	0.300	20.0	8.10	5.85	19.01	10.93	2.95	38.75	0.00	0.00	0.00	282.30	142.58	102.66	14.61	0.00	17.53	72.5	1.5
S2 perm	6	2.0	100.0	90.0	10.0	1.60	0.045	0.300	1.0	0.300	20.0	6.78	4.32	13.50	7.08	2.07	26.96	0.00	0.00	0.00	164.10	82.88	59.67	12.27	0.00	14.72	75.3	1.5
S3 perm	6	2.0	97.0	90.0	7.0	1.10	0.045	0.300	1.0	0.300	20.0	4.80	2.08	6.62	3.50	1.04	13.23	0.00	0.00	0.00	57.75	29.17	21.00	8.75	0.00	10.50	79.5	1.5
S4 perm	6	2.0	95.0	90.0	5.0	0.80	0.045	0.300	1.0	0.300	20.0	3.52	1.08	3.38	1.84	0.56	6.85	0.00	0.00	0.00	22.16	11.19	8.06	6.45	0.00	7.74	82.3	1.5
N5 perm	6	2.0	105.0	92.5	12.5	2.00	0.055	0.300	1.0	0.300	20.0	9.57	8.25	25.78	15.26	5.03	54.33	0.00	0.00	0.00	418.50	211.36	152.18	16.79	0.00	20.14	72.4	1.5
N6 perm	6	2.0	102.0	92.5	9.5	1.50	0.055	0.300	1.0	0.300	20.0	7.30	4.70	14.89	8.83	2.93	31.35	0.00	0.00	0.00	186.01	93.94	67.64	12.87	0.00	15.45	77.1	1.5
N7 perm	6	2.0	100.0	93.0	7.0	1.10	0.055	0.300	1.0	0.300	20.0	5.43	2.54	8.09	4.84	1.62	17.08	0.00	0.00	0.00	76.29	38.53	27.74	9.64	0.00	11.56	81.4	1.5
N8 perm	6	2.0	100.0	94.0	6.0	1.00	0.055	0.300	1.0	0.300	20.0	4.72	1.98	5.94	3.64	1.23	12.78	0.00	0.00	0.00	49.88	25.19	18.14	8.40	0.00	10.08	83.9	1.5
N9 perm	6	2.0	99.0	95.0	4.0	0.60	0.055	0.300	1.0	0.300	20.0	3.22	0.79	2.64	1.63	0.57	5.63	0.00	0.00	0.00	15.23	7.69	5.54	5.76	0.00	6.92	88.1	1.5
N10 perm	6	2.0	98.0	96.0	2.0	0.30	0.055	0.300	1.0	0.300	20.0	1.88	0.20	0.66	0.48	0.20	1.53	0.00	0.00	0.00	2.38	1.20	0.86	3.28	0.00	3.94	92.1	1.6
perm West	8	2.0	76.0	71.0	5.0	0.00	0.055	0.300	1.0	0.300	20.0	3.89	0.00	5.50	2.14	0.83	8.47	0.00	0.00	0.00	27.63	13.96	10.05	6.97	0.00	8.37	62.6	1.5



replace rockery west of proposed house with soldier pile wall